

Tokyo Big Sight
East Hall 3+8



TOKYO



EXPLORE FINESSE

3rd Tokyo International Trade Fair for Wine & Spirits

2026 04.
15-17
(Wed.) (Fri.)

Post Show Report 2026

Concurrent Events



ProWine Tokyo Organizer Office

Messe Düsseldorf Japan Ltd.

prowine-tokyo.com

info@prowine-tokyo.com



ProWine Tokyo 2026

Event	ProWine Tokyo 2026
Date	15-17 April 2026 (Wed.-Fri.) 10:00-17:00
Venue	Tokyo Big Sight, East Hall 3+8
Organized by	Messe Düsseldorf Japan Ltd.
Supported by	Japan Sommelier Association Japan Wines and Spirits Importers' Association Wine Importers Association of Japan

Concurrent Events

食品・食料・機器・資材の業務用専門展示会
FABE 東京 2026
 The World Food And Beverage Great Expo TOKYO
 The Japan Food Journal Co.,Ltd.

ISM JAPAN
anuga SELECT Japan
 Koelnmesse Co.,Ltd.

プレミアム★フードショー
PREMIUM
 FOOD SHOW 2026
 Premium Food Show

Partners

Media Partners:
 The Star Wine List
 "the drinks business ASIA"
 "Wine Kingdom"
 "Winart"
 "Shuhan News"
 "global drinks intel."

Education Partner:
 WSET

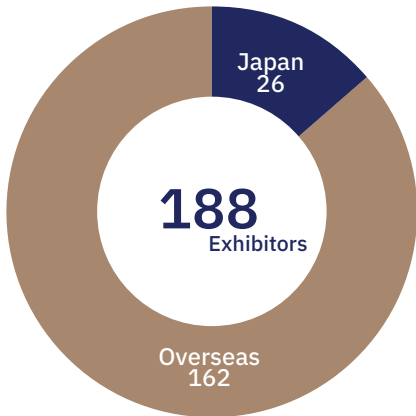
Glass Partners:
 Riedel Japan
 Toyo Sasaki Glass

Glass Washing Partner:
 Winterhalter Japan

Water Partner:
 antipodes

Facts & Figures

Exhibitors






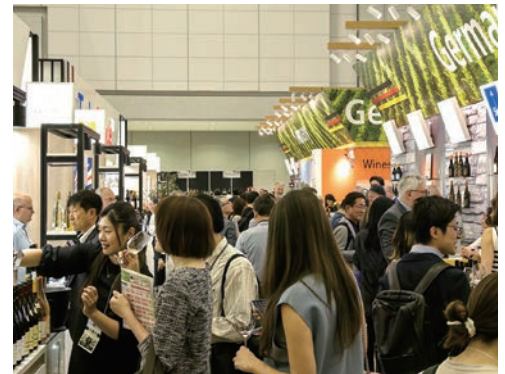
from **23** countries

from overseas **86.2%**

Listed Products **1,200+** bottles

Top 3 countries:

1. Germany  32 exhibitors
2. France  29 exhibitors
3. Japan  26 exhibitors



Pavilions:

-  France
-  Garnacha/Grenache European Quality Wines
-  Georgia (New Generation Wines from Georgia)
-  Germany
-  Greece
-  Romania
-  Serbia
-  South Africa
-  Spain (D.O. Rueda, Camara de ComercioHispano Japonesa)
-  Uruguay
-  USA (SUSTA, New York Wine & Grape Foundation)

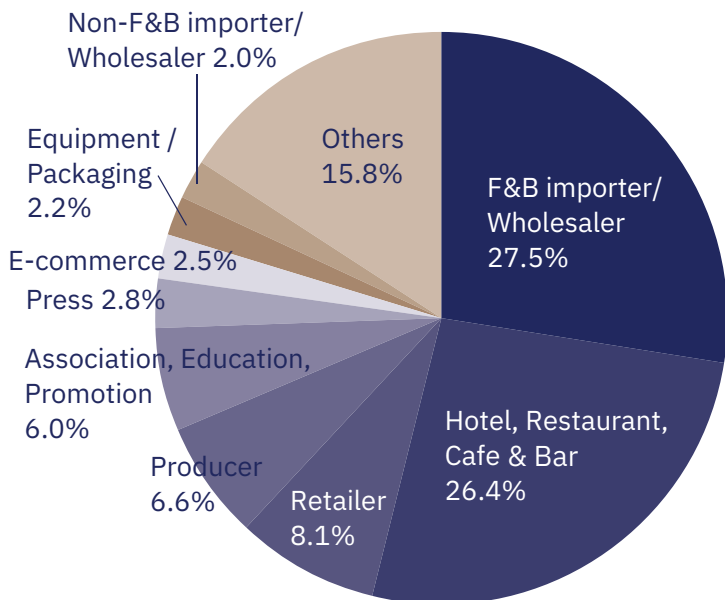


Visitors *the total from 5 concurrent events

April 15 (Wed.) 🌞 18,102
April 16 (Thu.) 🌞 19,307
April 17 (Fri.) 🌞 19,647

Total: **57,056** visitors

Visitor by Industry



Among the visitors,

80.0% possess purchasing authority or influence decision-making processes.

*from ProWine Tokyo visitor pre-registration data

Key Buyers

Importers & Wholesalers

ENOTECA Co.,Ltd., Firadis Ltd., KOKUBU GROUP Corp., Luc Corporation Ltd., Mitsubishi Shokuhin Co.,Ltd., Mottox Inc., NIHON SHURUI HANBAI Co.,Ltd., NIPPON ACCESS, Inc., SMILE Corp., Suntory Holdings Ltd., TOKO TRADING Co.,Ltd., Vinos Yamazaki Co.Ltd., and more

Retailers & Department Stores

AEON RETAIL CO.,Ltd., Cave de Relax Co.,Ltd., CO-OP DELI Consumer's Co-Operative Union, Daimaru Matsuzakaya Department Stores Co.Ltd., EBISU WINE MART, FamilyMart Co.,Ltd., IMADEYA Co.,Ltd., Isetan Mitsukoshi Ltd., Lawson, Inc., LIQUOR MOUNTAIN Co.,Ltd., Meidi-Ya Co.,Ltd., OK Corp., SEIJO ISHII Co.,Ltd., Takashimaya Company Ltd., TOKYU DEPARTMENT STORE Co.,Ltd., Yokohama Kimijimaya, and more

Hotel

ANA InterContinental Tokyo, Andaz Tokyo, Bvlgari Hotel Tokyo, Conrad Tokyo, FOUR SEASONS HOTEL TOKYO AT MARUNOUCHI, Hoshino Resorts Inc., InterContinental Tokyo Bay, KEIO PLAZA HOTEL Co.,Ltd., Meiji Kinenkan, NEW OTANI Co.,Ltd., Onko Chishin Inc., Oriental Land Co.,Ltd., PALACE HOTEL Co.,Ltd., and more

Exhibitors' Evaluation

Satisfaction
Expectation met or exceeded:

75.7%

Quality of Visitors
Expectation met or exceeded:

91.7%

Participation in ProWine Tokyo 2027
Planning or considering:

94.3%

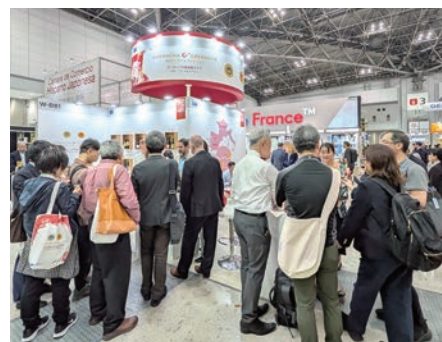
Visitors' Evaluation

Satisfaction
Expectation met or exceeded:

92.5%

Purpose Achievement
Objectives met or exceeded:

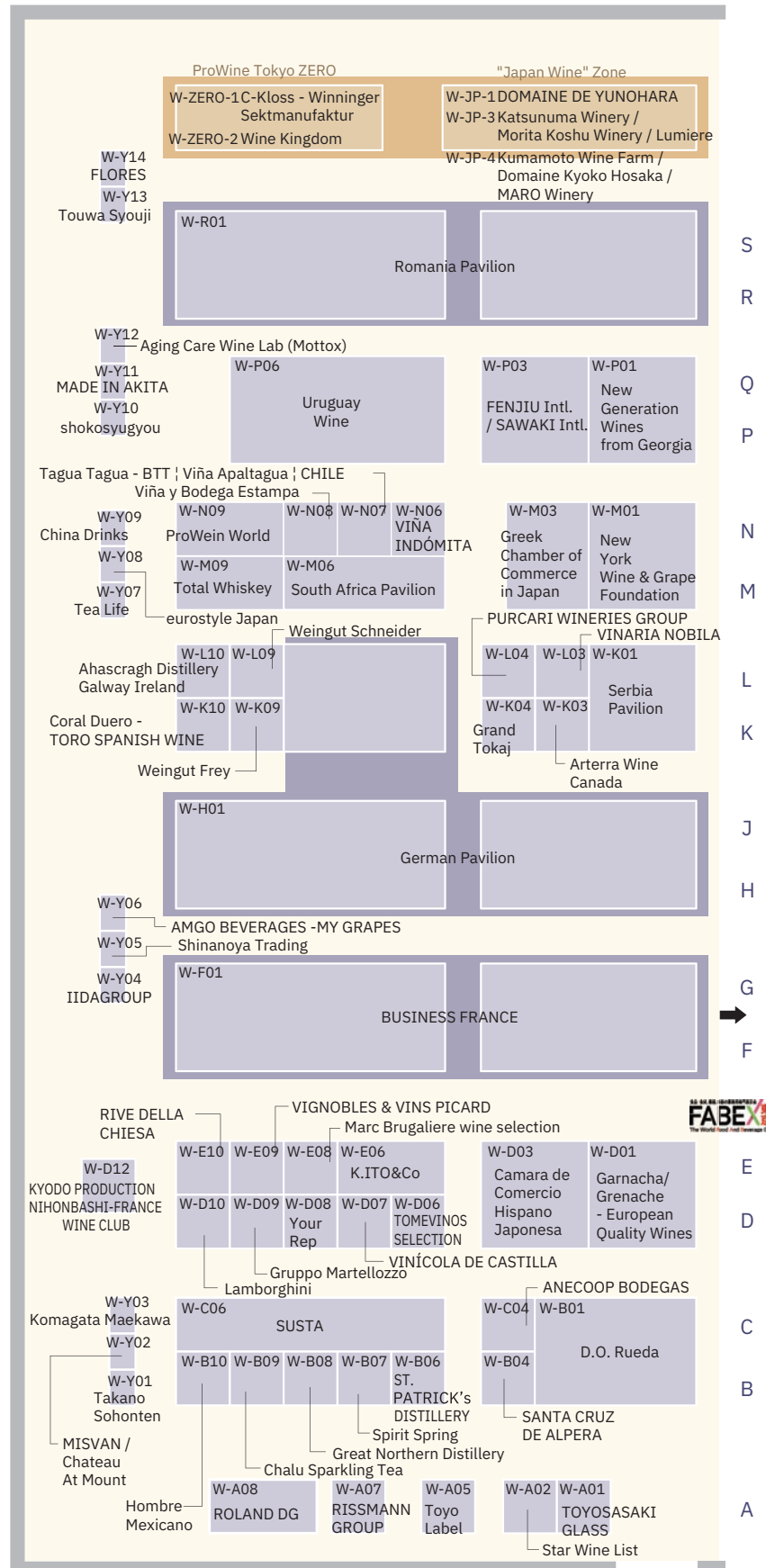
95.0%



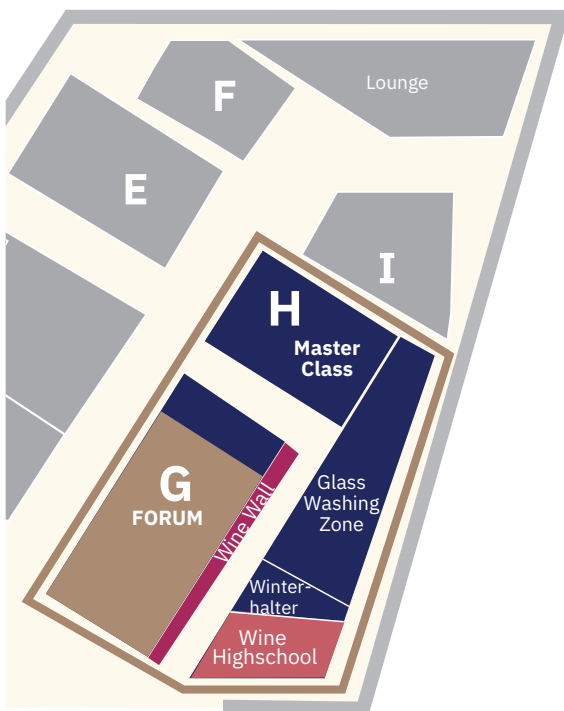
ProWine Tokyo 2026



East Hall 3 | Exhibition zone



East Hall 8 | Event zone



Exhibitor List (East Hall 3+8)

Australia		VINE ERA	W-P01	Domaine Kyoko Hosaka	W-JP-4	Wellington Wines	W-M06
Spirit Spring	W-B07	Germany		DOMAINE DE YUNOHARA	W-JP-1	Spain	
Austria		C-Kloss - Winninger Sektmanufaktur	W-ZERO-1	euostyle Japan	W-Y08	ANELOOP BODEGAS W-C04	
Weingut Schneider	W-L09	*German Pavilion		FLORES	W-Y14	*CAMARA DE COMERCIO HISPANO JAPONESA	
Canada		The Federal Ministry of Agriculture, Food and Regional Identity (BMLEH)	W-H01	IDAGROUP	W-Y04	Bodegas La Purisima	W-D03-5
Arterra Wines Canada	W-K03	Wines of Germany	W-H01	Katsunuma Winery	W-JP-3	BODEGAS Y VIÑEDOS TAMARAL	W-D03-3
Chile		Deutsches Haus Japan	W-H01-01	KYODO PRODUCTION - NIHONBASHI-FRANCE WINE CLUB	W-D12	CASTELL D'OR	W-D03-2
INDOMITA GROUP	W-N06	FINDEST JAPAN	W-H01-19	Kumamoto Wine Farm	W-JP-4	DESTILERIA TIERRA DE JAGUAR	W-D03-3
Tagua Tagua - BTT Viña Apaltagua CHILE	W-N07	FRANZI cream liqueur	W-H01-26	K.I.TO&Co	W-E06	D.O. La Mancha	W-D03-1
Viña y Bodega Estampa	W-N08	German Wine Group GWG	W-H01-28	Komagata Maekawa	W-Y03	MONTE LA REINA	W-D03-4
China		GP Winery	W-H01-08	Lumiere	W-JP-3	*D.O. RUEDA	
China Drinks	W-Y09	Ihringer	W-H01-17	MADE IN AKITA	W-Y11	Alvarez y Diez	W-B01
Chalu Sparkling Tea	W-B09	KESSLER-ZINK	W-H01-24	MARO Wines	W-JP-4	Bodega Gotica	W-B01
Fenjiu International & SAWAKI International	W-P03	mkquadrat	W-H01-04	Morita Kosu Winery	W-JP-3	Bodega Hermanos del Villar	W-B01
RISSMANN GROUP	W-A07	MO-RHE-NA	W-H01-10	ROLAND DG	W-A08	Bodegas Veganzones	W-B01
shokosyugyou	W-Y10	Schmitt Söhne Wines	W-H01-09	Sanctuary books	East8-W-1	BODEGAS VERDEAL	W-B01
France		Schott	W-H01-11	Shinanoya Trading	W-Y05	Hijos de Alberto	W-B01
*BUSINESS FRANCE	W-F01-8	Tokuri	W-H01-02	Takano Sohonten	W-Y01	Rodriguez Sanzo	W-B01
Cave de Sancerre	W-F01-1	United Winemakers of Germany	W-H01-22	Tea Life	W-Y07	Bodegas Coral Duero D.O.Toro	W-K10
CHATEAU DE MALLERET	W-F01-2	Velis Vineyards	W-H01-03	TOWASHOJI	W-Y13	VINÍCOLA DE CASTILLA	W-D07
Château du Rouët	W-F01-4	Villa Tabernus	W-H01-15	TOYO-SASAKI GLASS	W-A01	*Garnacha / Grenache - European Quality Wines	
CHÂTEAU DU SEUIL	W-F01-10	Wasem Wein	W-H01-21	Toyo Label	W-A05	BODEGAS ARAGONESAS	W-D01
CHATEAU LES BERTRANDS	W-F01-3	Weingut Bretz	W-H01-13	Wine Kingdom	W-ZERO-2	BODEGAS SAN ALEJANDRO	W-D01
COGNAC CHOLLET	W-F01-2	Weingut Fleischmann Krieger	W-H01-25	Winterhalter Japan	East8-W-2	BODEGAS SAN VALERO	W-D01
Couleurs d'Aquitaine	W-F01-13	Weingut Georg Müller Stiftung	W-H01-16	Mexico		Cellers Unió	W-D01
Domaine Bargemone	W-F01-5	Weingut Kloster Ebernach	W-H01-27	HOMBRE MEXICANO	W-B10	GRANDES VINOS	W-D01
Domaine de Petit Roubié	W-F01-1	Weingut Paul Claus	W-H01-14	Portugal		SANTA CRUZ DE ALPERA	W-B04
DOMAINE DES DIABLES & MIP	W-F01-6	Weingut Schloss Reinhartshausen	W-H01-23	ADEGAMÂE	W-D08	TOMEVINOS FAMILY ESTATES	W-D06
DOMAINE DES FLORETS	W-F01-6	Weingut Sinß	W-H01-06	Republic of Moldova		Sweden	
DOMAINES AURIOL	W-F01-9	Weingut Stefan Bietighoefer	W-H01-02	MISVAN /Chateau At Mount	W-Y02	Star Wine List	W-A02
HESIODE	W-F01-15	Weinhaus Gebr. Steffen GmbH	W-H01-18	PURCARI WINERIES GROUP	W-L04	USA	
LES MAITRES VIGNERONS DE LA PRESQU'ILE DE SAINT TROPEZ	W-F01-5	Weinwelt Ungstein	W-H01-12	VINARIA NOBILA	W-L03	*New York Wine & Grape Foundation W-M01	
LES MARMANDAIS	W-F01-12	Winery Schmitges	W-H01-05	Romania		*SUSTA	W-C06
LES VIGNERONS D'UNI-MEDOC	W-F01-3	639 ROKU SAN-Q	W-H01-07	*Romania Pavilion	W-R01	American Custom Distilling	W-C06
LGI WINES	W-F01-14	Weingut Frey	W-K09	Casa de Vinuri Cotnari	W-R01	Liberty & Plenty Distillery	W-C06
MAISON SAINT AIX	W-F01-4	Greece		Crama De Matei	W-R01	Tennessee Craft Spirits	W-C06
MONTAUD	W-F01-10	*Greek Chamber of Commerce in Japan	W-M03	DOMENIILE DROPIA	W-R01	Total Whiskey	W-M09
Vignobles Vellas	W-F01-7	Nostimia	W-M03	Domeniile Sahateni	W-R01	Uruguay	
Vins de Provence	W-F01-11	YORUGOS – Alpha Estate & Sacred Mountain	W-M03	La Horincie	W-R01	*Uruguay Wine	
WINES OVERLAND	W-F01-9	ZIN IDEOS WINERY	W-M03	MERA COM INTERNATIONAL	W-R01	Bodega Cerro del Toro	W-P06
*Garnacha / Grenache - European Quality Wines		Hong Kong		NATURA	W-R01	Bodega Garzón	W-P06
Chapoutier -Bila Haut	W-D01	Marc Brugaliere wine selection	W-E08	OSTROVIT	W-R01	Bouza / Las Espinas	W-P06
Château Nadal Hainaut	W-D01	Hungary		SADELLI PRODCOM	W-R01	BraccoBosca Winery	W-P06
Dom Brial	W-D01	Grand Tokaj	W-K04	VITICOLA CORCOVA	W-R01	Juanicó / Deicas	W-P06
Domaine Piquemal	W-D01	Ireland		Serbia		Los Nadies Bodega-Almacén	W-P06
Les Vignobles de Rombeau	W-D01	Ahascragh Distillery Galway Ireland	W-L10	*Serbia Pavilion (ProExpo)		Mederos Winery	W-P06
Le Cellier des Gourmets	W-D08	Great Northern Distillery	W-B08	Aleksandrovic Winery	W-K01	Montes Toscanini	W-P06
VIGNOBLES & VINS PICARD	W-E09	St. Patrick's Distillery	W-B06	BT Winery	W-K01	Pisano	W-P06
Georgia		Italy		Lastar Winery	W-K01	Viña Progreso	W-P06
*New Generation Wines from Georgia		Bosio Family Estates	W-D08	Podrum Pevac Distillery & Winery	W-K01		
8000 Vintages	W-P01	GRUPPO MARTELLOZZO	W-D09	Zaric Distillery	W-K01		
Binekhi	W-P01	Lamborghini	W-D10	Zvonko Bogdan Winery	W-K01		
Brother's Avaliani	W-P01	RIVE DELLA CHIESA	W-E10	South Africa			
Gurgenidze Family Winery Since 1875	W-P01	Japan		*South Africa Pavilion			
MESAUBRE	W-P01	AMGO BEVERAGES - MY GRAPES	W-Y06	Arid Wines	W-M06		
		Aging Care Wine Laboratory(Mottox)	W-Y12	Blake Family Wines	W-M06		
				Boland Cellar	W-M06		

Event Program



ProWine Tokyo Side Events - Discover Industry Trends:

- FORUM & Master Class Seminars
- "Star Wine List of the Year Japan" Award - The Michelin of the Wine Industry
- "Wine Wall" - A Comprehensive Overview of the Industry
- "Wine Highschool" Collaboration: New Characters Debut

22 FORUM & Master Class Sessions

Satisfaction: FORUM **96.1%**

Master Class **97.7%**



2nd "Star Wine List of the Year Japan 2026" Award Ceremony



"ProWine Tokyo Wine Wall"



2026 New Characters "Verdejo" & "Marselan" with "Wine Highschool" authors

ProWine Tokyo 2027

Event	ProWine Tokyo 2027
Date	13-15 April 2027 (Tue.-Thu.), 10 am - 5 pm
Venue	Tokyo Big Sight, East Hall 3
Scale	250 Exhibitors / 250 Booths (2026: 188 Exhibitors from 23 Countries)
Entrance Fee	JPY 5,000 (Tax Included) *Free-of-Charge for Pre-Registered Visitors (B2B only)
Organized by	Messe Düsseldorf Japan Ltd.
Co-Events	FABEX Tokyo, Premium Food Show, ISM Japan & anuga SELECT Japan
Supporters (tbc.)	National Tax Agency, Japan Sommelier Association, Japan Wines and Spirits Importers' Association, Wine Importers Association of Japan

Schedule

Application June 2026 ~	Application Due 27 Nov. 2026	Booth Allocation December 2026	Exhibition Fee Payment Due 11 Dec. 2026	Stand Construction 11-12 April, 2027	ProWine Tokyo 13-15 April, 2027
----------------------------	---------------------------------	-----------------------------------	---	---	------------------------------------

Contact

ProWine Tokyo Organizer Office
Messe Düsseldorf Japan Ltd.
Ms. Nao Tomita / Ms. Melina Trigutis
e-mail: info@prowine-tokyo.com

